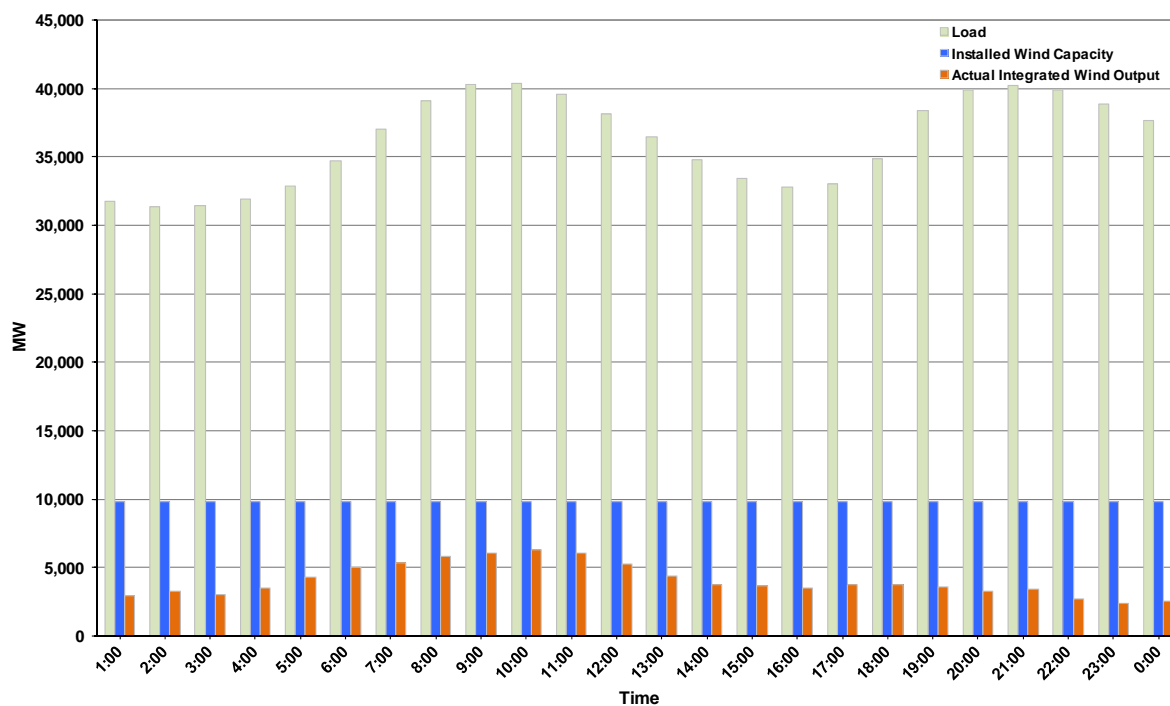




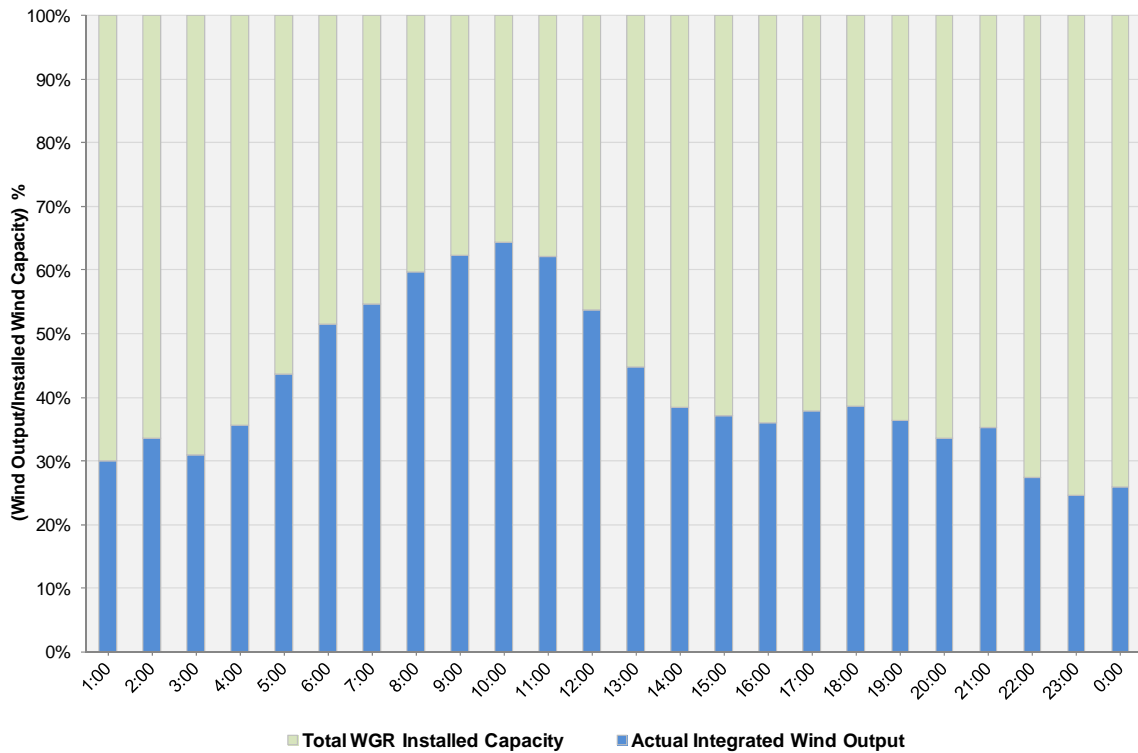
ERCOT Grid Operations Wind Integration Report: 02/11/12

Peak Load	40,419 MW
Load Peak Hour (HE)	10
Wind over Peak	6,300 MW
Wind Record 10/07/11	7,400 MW
Max Wind Value	6,368 MW
Wind Peak Time	10:03
Wind Integration %	15.86%

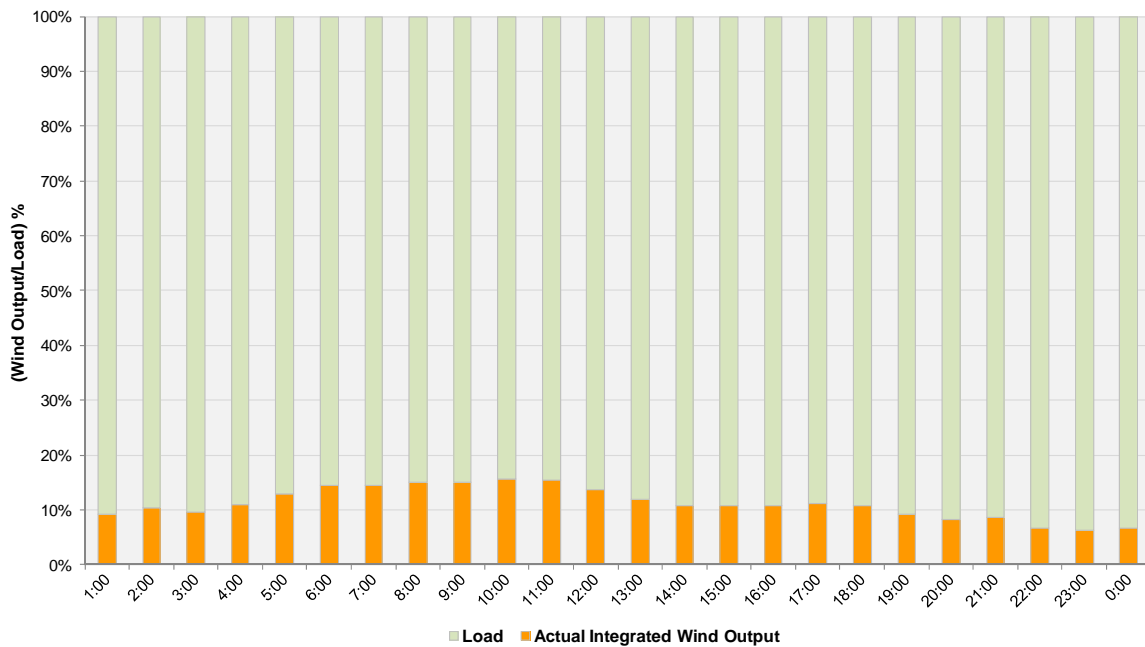
**Hourly Average Actual Load vs. Actual Wind Output
02-11-2012**



Actual Wind Output as a Percentage of the Total Installed Wind Capacity
02-11-2012



Actual Wind Output as a Percentage of the ERCOT Load
02-11-2012



ERCOT Load vs. Actual Wind Output 2/4/2012 - 2/11/2012

